

Brook Street Car Park, Tavistock

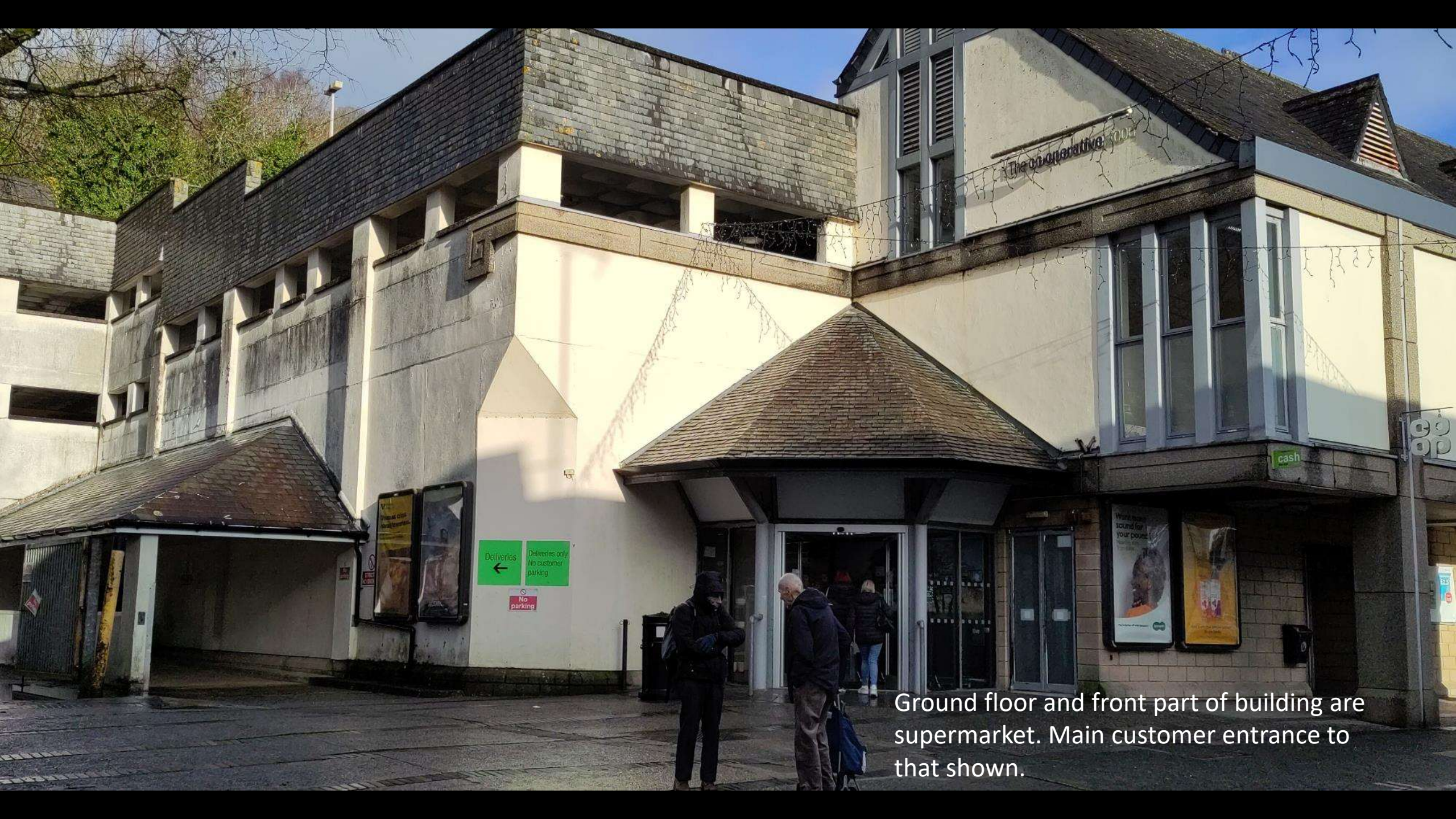
Visited Friday 5th January 2024



Viewed from
Brook Street.

Pedestrian
entrance in
lobby to left
of blue
poster. Car
entrance by
green sign.





Ground floor and front part of building are supermarket. Main customer entrance to that shown.



Vehicle entrance as seen approaching after turning off A386 from east.

Houses are on Old Exeter Road (seen from rear). Open car park is private to another shop.





Setting of entrance to car park lifts and main stairs. Example of pedestrian preferring to use vehicle ramp.



Doors to lift lobby on middle floor.
(Note no assisted opening for
wheelchair users.)



Main
stairs



Top landing showing stairs and doors to lift lobby.



Lift doors. Lifts not working on day of visit, so no interior photos.





Steps from rear of
car park (middle
floor) to Old
Exeter Road



Middle floor vehicle and pedestrian exits





Top floor



Back staircase /
emergency exit (to
yard)

Top floor view from / to Old
Exeter Rd.



Side yard seen from top floor and from Brook Street. (Used for supermarket staff / deliveries, not public parking.)

